

GUIDELINES TO USE THE STATE FIELD



PRIORITIES
 STATE CHAMPIONSHIPS 1
 SPECIAL INTEREST GROUPS 2
 SPECIAL EVENTS 3
 CLUBS/ASSOCIATES ACTIVITY 4

SPECIAL INTEREST GROUP

CLUB / ASSOCIATION

ORGANIZATION

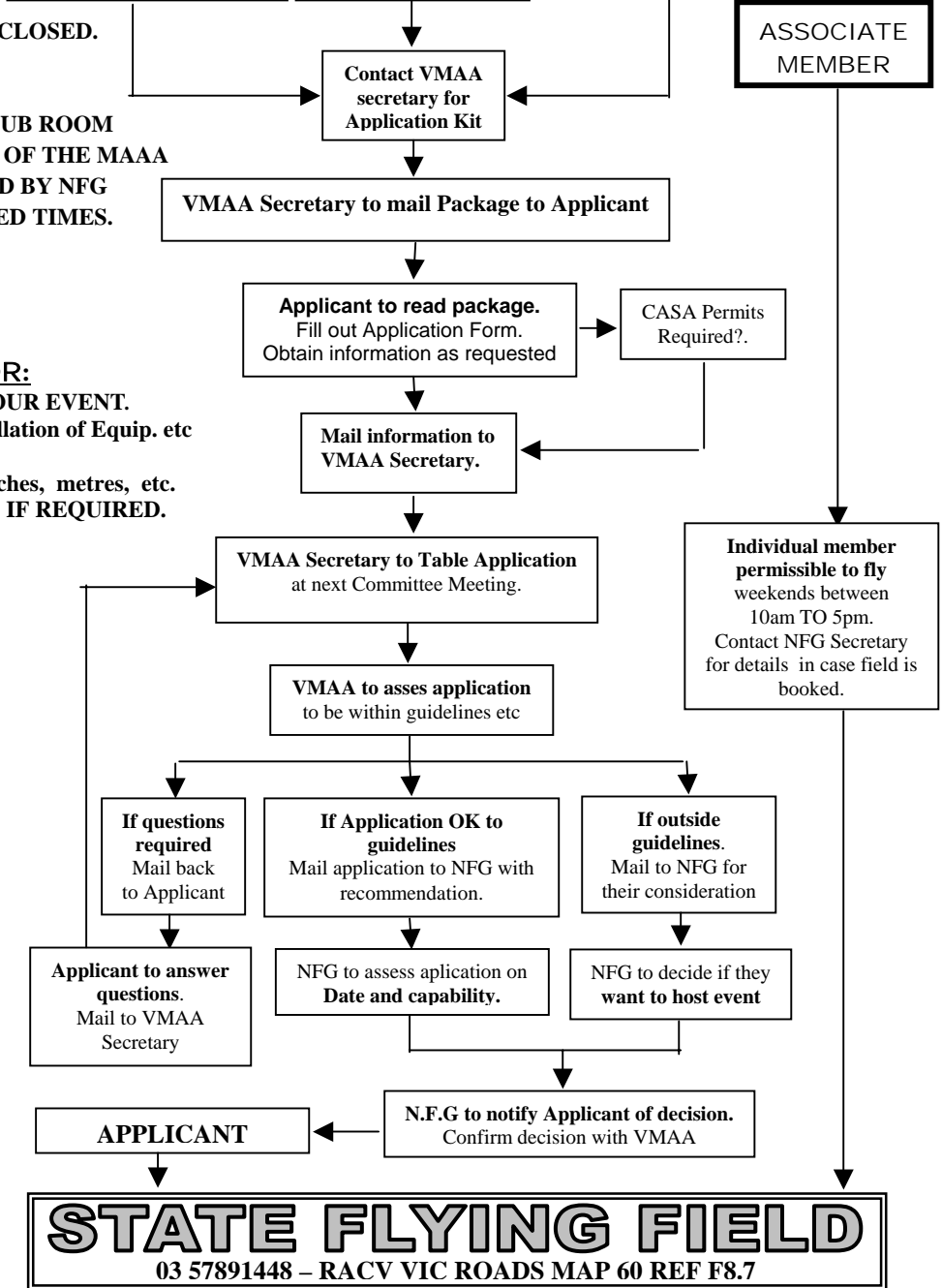
ASSOCIATE MEMBER

SPECIAL CONDITIONS.

- THE FRONT GATE MUST REMAIN CLOSED.
- 1000ft HEIGHT CLEARANCE.
- FLYING TIMES:- 9am TO 6pm.
- NO MODELS ALLOWED IN THE CLUB ROOM
- ALL FLYERS MUST BE A MEMBER OF THE MAAA
- FIELD TO BE OPENED AND CLOSED BY NFG
- NO USE OF FIELD OUTSIDE BOOKED TIMES.

YOU WILL BE RESPONSIBLE FOR:

- * SETTING UP THE FIELD TO SUIT YOUR EVENT.
 Line marking. Competition layout, Installation of Equip. etc
- * SPECIAL EQUIPMENT SUCH AS:
 Timers, administration equipment, winches, metres, etc.
- * INSTALLING SPECTATOR FENCING IF REQUIRED.
- * HIRING OF EQUIPMENT.
 Tents, Port a loo's. (If required)



STATE FLYING FIELD
 03 57891448 – RACV VIC ROADS MAP 60 REF F8.7